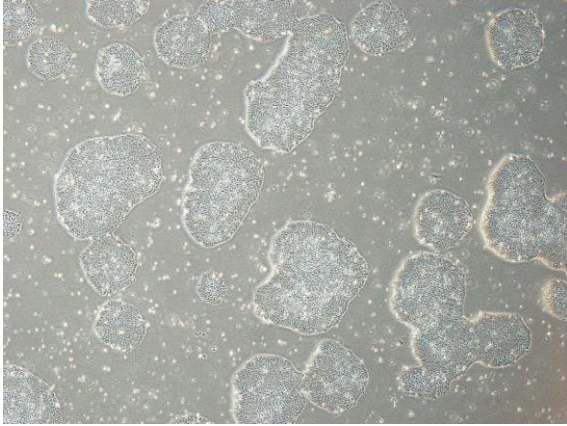
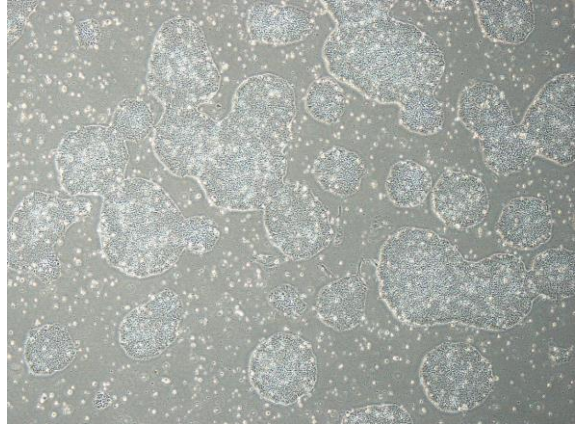


【 CiRA-j-1437 】 Morphology of iPSC colonies

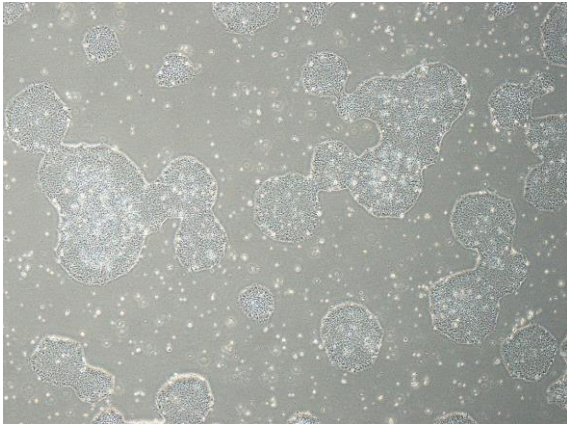
CiRA-j-1437-A: passage-3



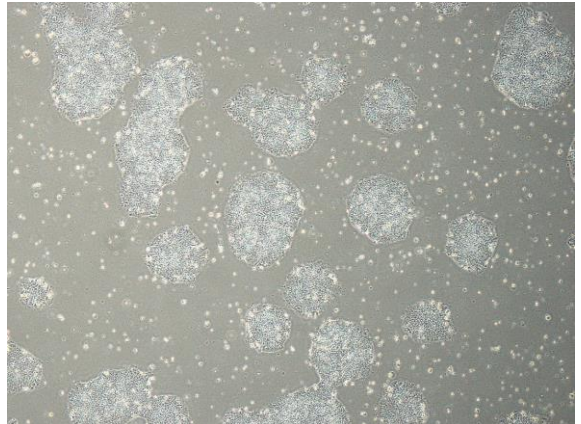
CiRA-j-1437-B: passage-3



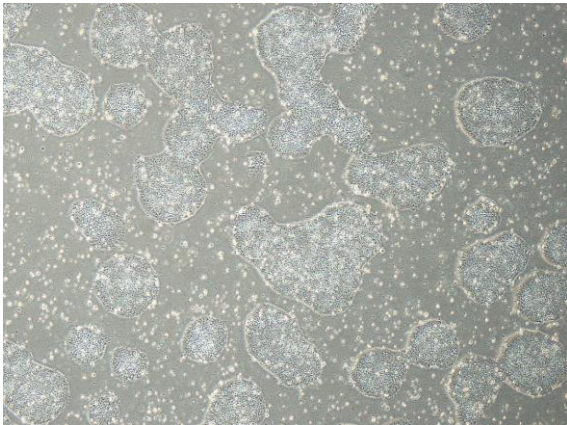
CiRA-j-1437-C: passage-3



CiRA-j-1437-D: passage-3



CiRA-j-1437-E: passage-3



CiRA-j-1437-F: passage-3



(All images were captured at 4x magnification)